

Franklin Global Trends Index

Ticker: FTGTREND

Factsheet as of December 31, 2025

Index Overview

The Franklin Global Trends Index is a multi-asset index focused on broad diversification across both geography and asset class. The index dynamically allocates based on market trends and potential key opportunities across the globe, all with an eye toward risk management.

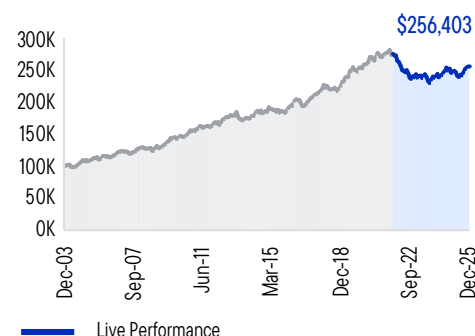
Index designed to pursue three powerful benefits:

Broad Diversification: The index is focused on broad diversification across both geography and asset class, while considering risk.

Compelling Trends: It dynamically allocates across 10 global assets classes based on the market trends we believe provide the best opportunity for future success.

Global Positioning: A dynamic, global approach to allocation means the index may be positioned to take advantage of more opportunities compared to a US-only strategy.

Hypothetical Growth of \$100,000



Average Annual Total Returns (%)

	1-Yr	3-Yr	5-Yr	10-Yr	Inception	Inception Date
Franklin Global Trends Index	4.14	2.34	-1.56	3.40	4.37	1/1/2004

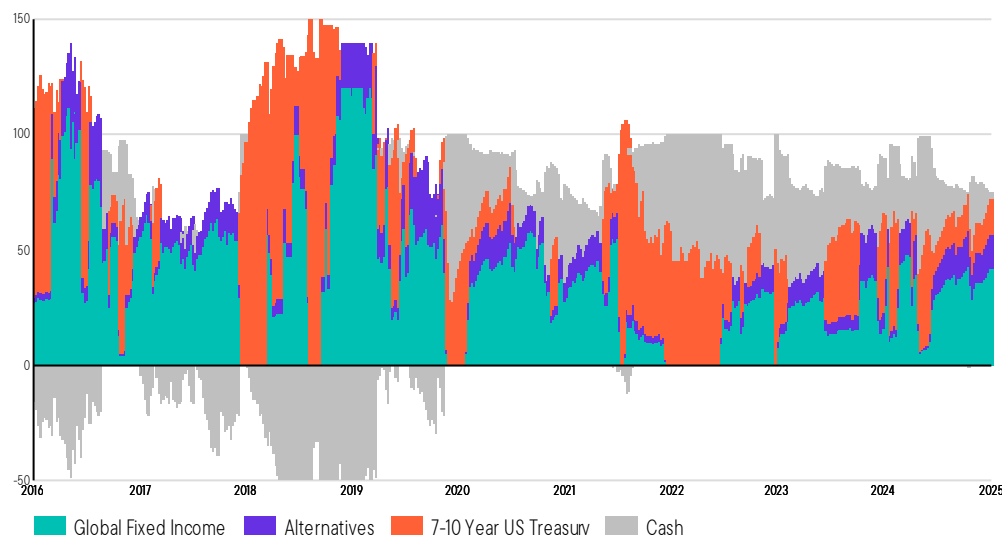
Cumulative Total Returns (%)

	3-Mth	YTD	2025	2024	2023	2022	2021	2020	2019	2018	2017	2016
Franklin Global Trends Index	1.66	4.14	4.14	2.43	0.49	-12.53	-1.43	9.22	12.45	2.11	14.07	5.67

Performance data quoted represents hypothetical and past performance, which does not guarantee future results. Current performance may differ from figures shown. Hypothetical back-test for illustrative purposes only. The Franklin Global Trends Index performance and weights data are based on back-tested data prior to the actual launch of the index. The Franklin Global Trends Index back-test inception is January 1, 2004. **All information for the index and any growth prior to its launch date is back-tested, based on the methodology that was in effect on the launch date of November 8, 2021.**

The performance of the Index may include certain embedded transaction costs but does not include fees or costs of any financial instrument referencing the Index. This "embedded index cost" will reduce any change in index value over the index term that would otherwise have been used in the calculation of index interest and it funds certain operational and licensing costs for the index. It is not a fee paid by you. **Please see disclosures on page 2.**

Constituent Allocations (% of Total)



Index weights for last 10 years. All information for the Index prior to its launch date is back-tested, based on the methodology that was in effect on the launch date on November 8, 2021. Weightings are based on total index, are subject to change at any time, and are provided for informational purposes only. Not to be construed as a recommendation to purchase or sell any security.

Data quoted represents hypothetical and past performance, which does not guarantee future results. Index performance includes hypothetical returns prior to launch date. All hypothetical performance results are presented for illustrative purposes only. **Please see disclosures on page 2.**

Index Information

Ticker	FTGTREND
Volatility Target	5%
Back-Test Inception	01/01/2004
Live Inception	11/08/2021
Use of Leverage	Yes
Index Currency	US Dollar
Rebalance Frequency	Trigger
Calculation Frequency	End of Day

Rebalance Frequency: Index rebalances when sufficient momentum measured across the assets that exceeds a pre-determined threshold.

Constituent Allocation Weights (% of Total)

	Index
Global Fixed Income	41.84
Global Equity	25.91
7-10 Year US Treasury Futures	15.13
Alternatives	15.12
Cash	2.01

Design Team

Franklin Templeton Investment Solutions translates a wide variety of investor goals into portfolios powered by Franklin Templeton's best thinking around the globe. The team includes more than 100 investment professionals, specializing in strategic asset allocation and tactical positioning, fundamental and quantitative research, active integration, and risk management.

Index Risks

Stock prices fluctuate, sometimes rapidly and dramatically, due to factors affecting individual companies, particular industries or sectors, or general market conditions. Bond prices generally move in the opposite direction of interest rates. Thus, as the prices of bonds adjust to a rise in interest rates, the performance of the Index may decline. International investments are subject to special risks, including currency fluctuations and social, economic and political uncertainties, which could increase volatility. These risks are magnified in emerging markets. During times of extreme market volatility, the Index will not be able to eliminate market losses or capture all market gains.

Important Information

It is not possible to invest directly in an index. There is no assurance that investment products based on the index will accurately track index performance or provide positive investment returns. There is no guarantee that any strategies utilizing the Index will be effective or successful. Multi-asset indices and diversification do not promise any level of performance, success, or guarantee against loss of principal. This does not serve as an offer to sell or a solicitation of an offer to buy any product or security or the use or suitability of the Index. This information should not be relied upon as investment advice, research, or a recommendation by Franklin regarding (i) any products tied to the Index, (ii) the use or suitability of the Index, or (iii) any security in particular.

Any information, statement or opinion set forth herein is general in nature, is not directed to or based on the financial situation or needs of any particular investor, and does not constitute, and should not be construed as, investment advice, forecast of future events, a guarantee of future results, or a recommendation with respect to any particular security or investment strategy or type of retirement account. Individuals seeking financial advice regarding the appropriateness of investing in any securities or investment strategies should consult their financial professional.

Index Information

The Franklin Global Trends Index is owned by Franklin Templeton. References below to "Index" apply to Franklin Global Trends Index and references below to "Licensor" apply to Franklin Templeton and its affiliates. Licensor has licensed the Index to Eagle Life Insurance Company to be used as a component of certain fixed index annuity products (the "Products"). The Index may be calculated by a third party or contain thirdparty data, each third-party provider and Licensor are collectively "Licensor Parties". The Products are not sponsored, operated, endorsed, sold or promoted by Licensor Parties. The Index, the proprietary data therein, and related trademarks, are intellectual property licensed from Licensor, and may not be copied, used, or distributed without Licensor's prior written approval. The Products have not been passed on as to their legality or suitability, and are not regulated, issued, endorsed, sold, guaranteed, or promoted by Licensor Parties. Licensor Parties make no express or implied warranties, and hereby expressly disclaims all warranties of merchantability or fitness for a particular purpose with respect to the Index or any data included therein. Without limiting any of the foregoing, in no event shall Licensor Parties have any liability for any special, punitive, indirect, or consequential damages (including lost profits), even if notified of the possibility of such damages.

"Volatility Control" Indices are designed to shift allocations, based on signals in the market, to help keep volatility at or near the stated target. When market volatility is relatively low the index will likely maintain exposure to riskier assets, such as equities. When volatility increases, the index is likely to reallocate so that it is weighted toward low-risk assets, such as cash.

The Franklin Global Trends Index is an excess return index. An excess return index deducts the value of cash daily, which is reflected in the index value. The Index uses the US Federal Funds Effective Rate as its basis for the daily cash value.

There are risks relating to the Index discussed herein. Please request a copy of the applicable Index rulebook for additional information and disclosure.

Index-linked annuities are insurance contracts issued by an insurance company. Index-linked annuities are not invested in the Index itself, but rather interest is credited based on the performance of the Index and the rules prescribed in the insurer's Index crediting strategy. Index-linked annuities are not issued by Franklin.

Hypothetical and Live Performance

Any data for the period prior to index inception consists of pre-inception data calculated by retroactively applying the Index methodology. Simulated returns and pre-inception data are hypothetical and included for illustrative purposes only. Performance based on hypothetical returns prior to index inception and actual returns thereafter.

The Index was created on November 8, 2021. Levels for the Index prior to November 8, 2021 represent hypothetical data determined by retroactive application of a back-tested model, itself designed with the benefit of hindsight. Actual performance will vary, perhaps materially, from the performance set forth herein.

The performance of the Index may include certain embedded transaction costs but does not include fees or costs of any financial instrument referencing the Index.

Hypothetical performance results may have other inherent risks. No representation is being made that any account will or is likely to achieve profit or loss. The relevant market and economic conditions that prevailed will not necessarily reoccur. There are numerous other factors related to the markets in general or to the implementation of any specific trading program which cannot be accounted for. All hypothetical results are presented for illustrative purposes only. **Hypothetical and past performance is no guarantee of future performance.**

Back-testing and other statistical analysis material that is provided in connection with the Index use simulated analysis and hypothetical circumstances to estimate how it may have performed prior to its actual existence. The results obtained from "back-testing" information should not be considered indicative of the actual results that might be obtained from an investment or participation in a financial instrument or transaction referencing the Index. Neither Franklin nor Solactive (Germany-based index provider operating globally since 2007) provide assurance or guarantee that the products linked to the Index will operate or would have operated in the past in a manner consistent with these materials. The hypothetical historical levels have inherent limitations. Alternative simulations, techniques, modeling or assumptions might produce significantly different results and prove to be more appropriate. Actual results will vary, perhaps materially, from the simulated returns presented in this document.

The hypothetical performance information presented herein does not reflect the results of actual trading and calculation of the Index levels and performance do not reflect the fees and expenses that an investor would pay. These fees and expenses would cause the actual and back-tested performance of the Index to be lower.

Sources: Bloomberg and Morningstar, underlying data provider Solactive AG. Information is historical and may not reflect current or future portfolio characteristics. All portfolio holdings are subject to change. Important data provider notices and terms available at www.franklintempletondatasources.com.

© 2025 Franklin Templeton. All rights reserved.